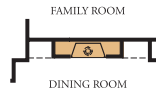
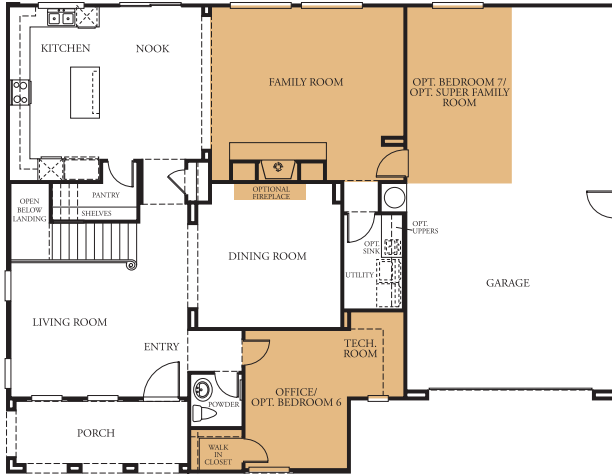


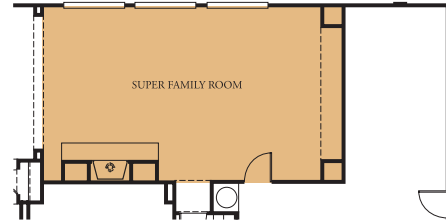


33036 Sheila Lane • Wildomar, CA 92503
 (951) 678-9316

FIRST FLOOR



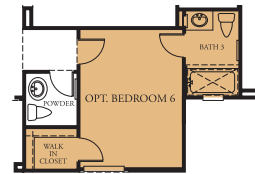
OPTIONAL FIREPLACE AT DINING ROOM SIDE ONLY



OPTIONAL SUPER FAMILY ROOM AT GARAGE



OPTIONAL BEDROOM 7 AT GARAGE



OPTIONAL BEDROOM 6 WITH BATH 3 AT OFFICE

Residence Three - First Floor

Approx. 3,405 - 3,588 sq. ft.

- Four Bedrooms
- Two and One-half Bathrooms
- Office
- Loft
- Four-Space Tandem Garage
- Optional Super Family Room,
- Fifth and Seventh Bedrooms,
- Sixth Bedroom with Third Bathrooms,
- Master Bedroom Retreat and Master Deck

